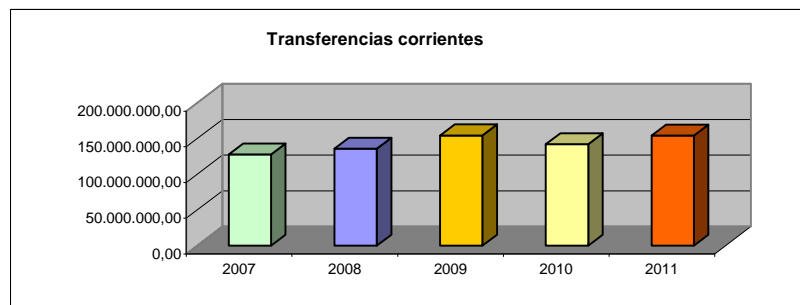
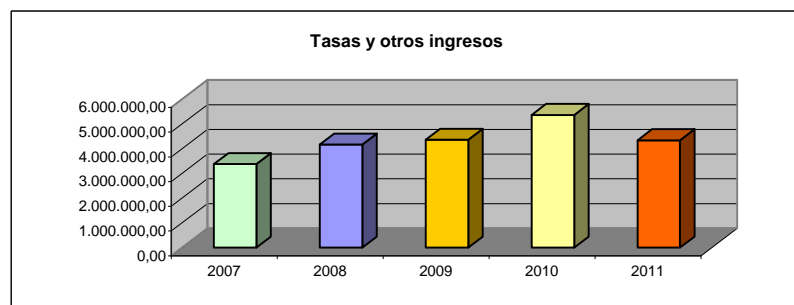
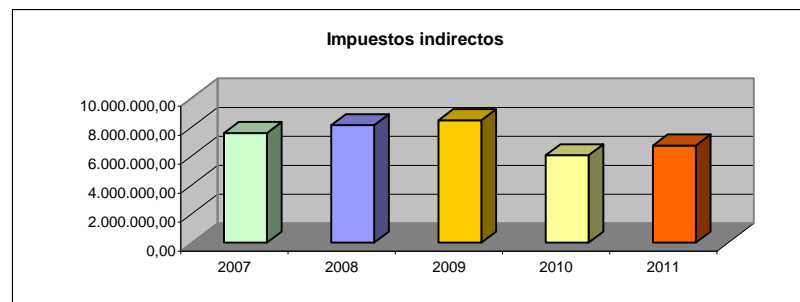
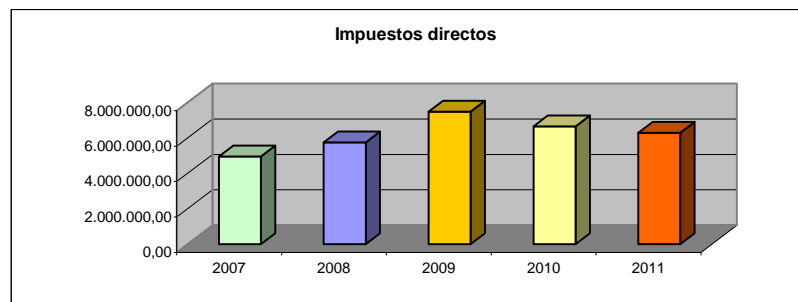


PRESUPUESTO DIPUTACIÓN PROVINCIAL 2007-2011

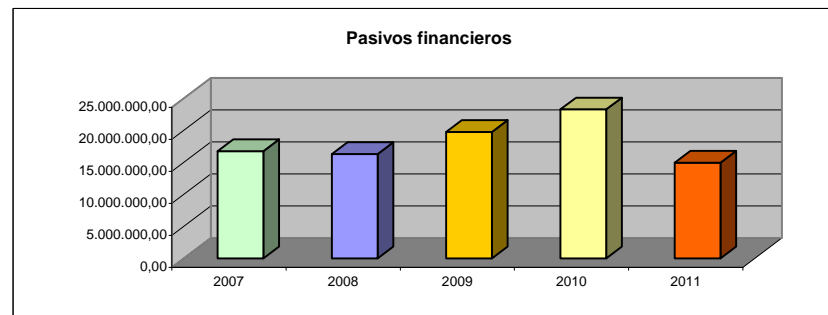
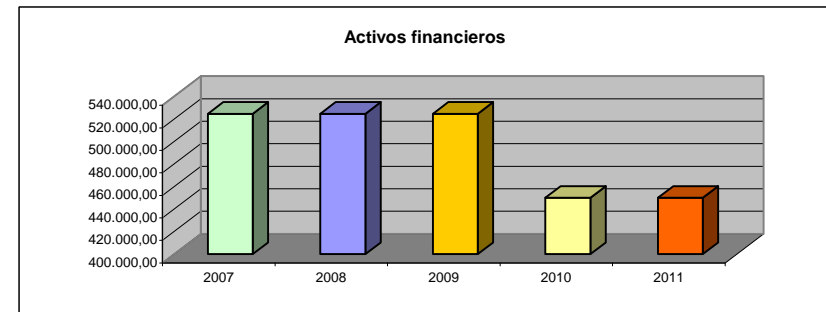
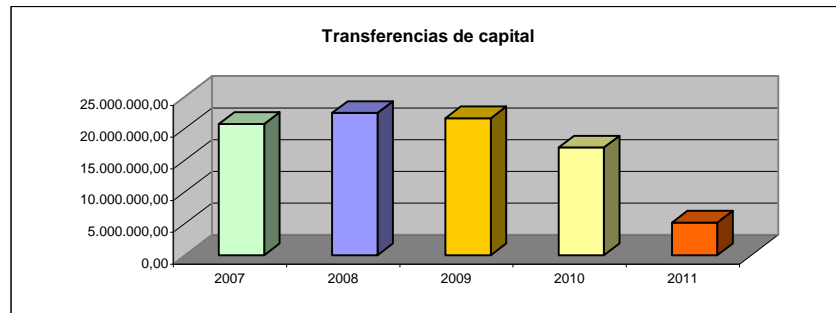
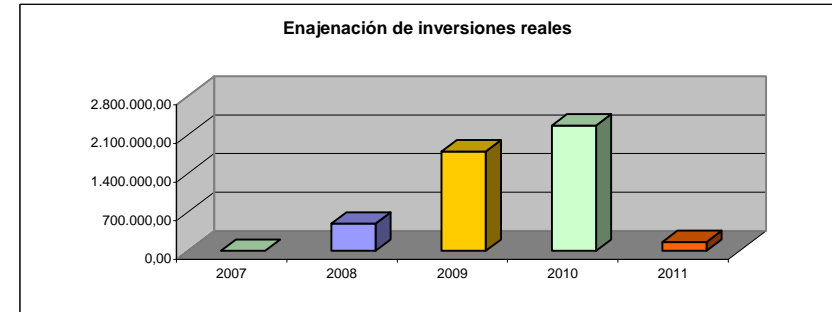
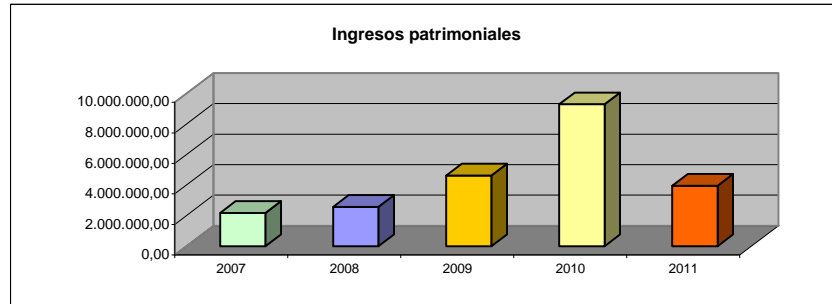
ESTADO DE INGRESOS

	2007	2008	2009	2010	2011	% DIFER
Impuestos directos	4.954.675,20	5.760.772,60	7.483.824,00	6.654.907,51	6.289.529,74	26,94
Impuestos indirectos	7.577.198,58	8.115.822,32	8.466.934,00	6.040.454,92	6.709.980,00	-11,45
Tasas y otros ingresos	3.371.117,98	4.164.038,91	4.362.632,70	5.364.216,68	4.339.681,58	28,73
Transferencias corrientes	127.762.724,83	135.935.266,12	154.506.641,46	142.165.312,65	154.287.732,15	20,76
Ingresos patrimoniales	2.180.454,71	2.577.228,93	4.638.120,01	9.304.997,68	3.964.913,33	81,84
Enajenación de inversiones reales		493.108,35	1.800.000,00	2.271.399,32	159.000,00	
Transferencias de capital	20.702.492,65	22.448.393,18	21.619.037,55	16.990.849,75	5.147.663,08	-75,14
Activos financieros	524.813,78	524.813,78	524.813,78	450.000,00	450.000,00	-14,26
Pasivos financieros	16.774.804,57	16.336.360,67	19.760.400,23	23.307.026,66	14.987.285,76	-10,66
TOTAL	183.848.282,30	196.355.804,86	223.162.403,73	212.549.165,17	196.335.785,64	6,79



PRESUPUESTO DIPUTACIÓN PROVINCIAL 2007-2011

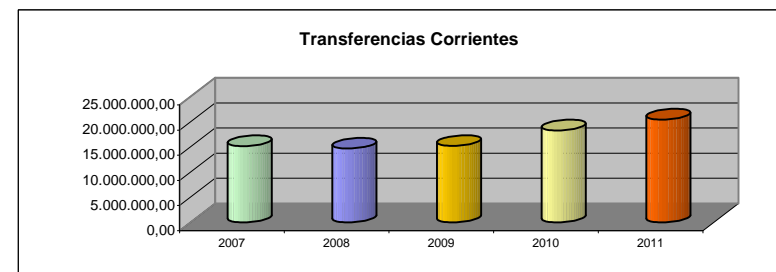
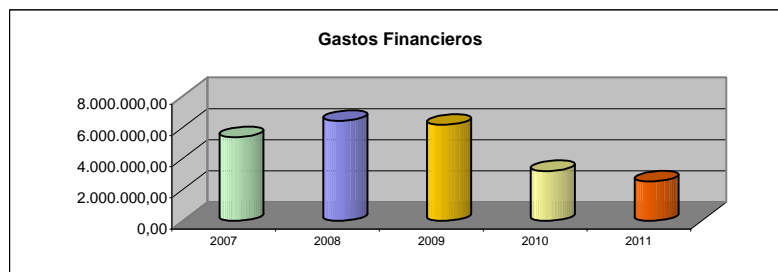
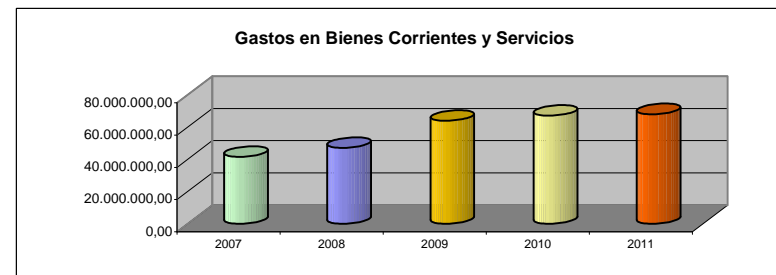
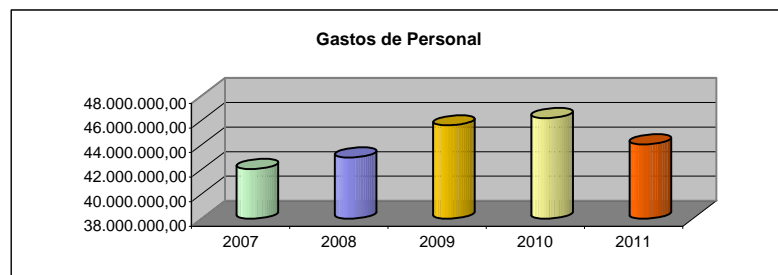
ESTADO DE INGRESOS



PRESUPUESTO DIPUTACIÓN PROVINCIAL 2007-2011

ESTADO DE GASTOS

	2007	2008	2009	2010	2011	% DIFER
Gastos de Personal	42.027.058,02	42.964.297,20	45.592.082,36	46.181.860,21	44.035.665,53	4,78
Gastos Corrientes en Bienes y Servicios	41.508.007,25	47.092.179,91	63.888.674,81	67.065.894,40	68.000.978,17	63,83
Gastos Financieros	5.368.926,58	6.416.481,87	6.169.000,54	3.193.756,90	2.529.174,66	-52,89
Transferencias Corrientes	15.156.624,92	14.694.843,59	15.211.514,66	18.305.684,00	20.453.175,69	34,95
Inversiones Reales	20.900.874,58	20.765.475,48	25.267.653,70	29.435.271,26	18.816.444,23	-9,97
Transferencias de Capital	39.632.827,35	44.516.967,04	45.901.843,30	29.076.710,48	21.374.954,62	-46,07
Activos Financieros	674.813,78	1.644.726,17	2.620.726,17	1.664.824,78	1.015.200,00	50,44
Pasivos Financieros	18.579.149,82	18.260.833,60	18.510.908,19	17.625.163,14	20.110.192,74	8,24
TOTAL	183.848.282,30	196.355.804,86	223.162.403,73	212.549.165,17	196.335.785,64	6,79



PRESUPUESTO DIPUTACIÓN PROVINCIAL 2007-2011

ESTADO DE GASTOS

